

# MCS RAIL

RAILWAY INFRASTRUCTURE SOLUTIONS

SAFETY | QUALITY | RELIABILITY



SAFETY  
FIRST



PRECISION  
IN ACTION



MINIMIZING  
DOWNTIME



MAXIMIZING  
RELIABILITY



LOCAL EXPERTISE.  
GLOBAL IMPACT.

STRONGER RAILWAYS.  
**CONNECTED FUTURES.**

EDITION 2026

## Track

# RENEWAL & MAINTENANCE

Our skilled team ensures precision and reliability in every renewal and maintenance operation to keep rail networks safe and efficient.



## About us

Since 2017, MCS Rail has been committed to delivering reliable, high-quality railway solutions that support infrastructure development and create lasting value for the communities we serve.

Starting as a small specialized business, MCS Rail has grown into a trusted company in the railway sector, driven by strong technical experience, dedication, and a clear focus on quality, safety, and timely delivery.

Our journey began with railway renewal and maintenance projects in Egypt, where we successfully demonstrated our capability to meet demanding project requirements and overcome operational challenges. Over the years, we have continued to expand our expertise in railway construction, maintenance, supplies, and technical support.

At MCS Rail, we believe that every project is an opportunity to build trust, deliver excellence, and contribute to the future of modern rail infrastructure.

## Content

About MCS rail	2
Core Values	4
Vision & Mission	4
Our Services	5
Key Achievements	5
Executed Projects	5
Our capabilities	6
Track life cycle	7
Projects gallery	8
Our products & machinery	22
Our people & Values	23
Quality	24
Safety	25
Environmental commitment	26
Our Valued Clients	27

## Core Values

From the beginning, with great ambition and dedication, MCS has always been committed to staying at the forefront by following its core values:

### Integrity

We are committed to integrity in all our transactions, behavior, and completed work.

### Total Quality Management

Our motto is to perform precisely, efficiently, and swiftly. We consider quality at every step of our work.

### Health, Safety & Environment

We always follow health and safety regulations to ensure the safe delivery of our projects. We are proud to be a zero-LTI company while managing multi-million contracts.

### Community Services Responsibility

Giving back to the community is one of our core values, from providing specialized training to local workers to participating in initiatives that enhance people's lives.



## Our Services

### Railway Track Renewal & Maintenance

Specialized in the renewal, rehabilitation, and maintenance of railway tracks, including dismantling, installation, alignment, and track works.

### Railway Signaling Works

Specialized in railway signaling, supporting safe and reliable train operations in accordance with project requirements and technical standards.

### Supply of Railway Machinery & Equipment

Supplying a wide range of railway machinery, tools, and equipment required for track construction, renewal, and maintenance works.

### Maintenance of Railway Machinery & Equipment

Providing maintenance & technical support for railway machinery & equipment to ensure high performance, reliability, and operational efficiency.

## Key Achievements

**42,000+ m**

Track Renewal & New Installations

**74+**

Railway Turnouts Renewed & Installed

**25,000+ m**

Rails Dismantled, Sorted & Stacked

**18+**

Turnouts Dismantled, Sorted & Stacked

**14,150+ tons**

Rails & Concrete Sleepers Transported to ENR Yards



## Vision & Mission

### Our Vision

To be recognized as one of the leading companies in the rail industry worldwide

### Our Mission

To deliver safe, reliable, and high-quality railway works with integrity, quality and professionalism

## EXECUTED PROJECTS

- Bashtil Station
- Ain Shams
- LRT (Light Rail Transit)
- IRMAS Workshop
- G A work shop - EL Farz
- El Bitash Yard – Dekheila Port
- El Tebeen Yard
- El Abwa Yard – Dekheila Port
- Imbaba Silos
- Abbassia - Tora
- El Wahat railway line
- El Obour Station
- El Hammam Block & Bahig Block
- El Thawra Station
- El kabbary yard
- Tanta yard
- Nashart station



# OUR CAPABILITIES

MCS Rail has the capability to deliver railway works **efficiently, safely, and cost-effectively**. Through practical field experience, skilled teams, and reliable machinery, we are able to execute projects within tight schedules while maintaining high quality and safety standards.



### FAST EXECUTION

Efficient planning and rapid mobilization to meet project deadlines.



### QUALITY COMMITMENT

Works are carried out according to required specifications and professional standards.



### COST EFFICIENCY

Smart execution methods that help reduce costs without compromising quality.



### FIELD EXPERIENCE

Real railway site experience supported by practical use of our own machinery.



### SAFETY FIRST

A strong commitment to safe working practices on every project to protect people, equipment, and operations.



### SKILLED WORKFORCE

Experienced teams ready to deliver.



### RELIABLE EQUIPMENT

Modern and well-maintained machinery for all tasks.



### ON-TIME DELIVERY

We meet deadlines without compromise.



### SAFETY STANDARDS

Committed to zero harm on every site.

WE BUILD RAILWAY SOLUTIONS THAT LAST

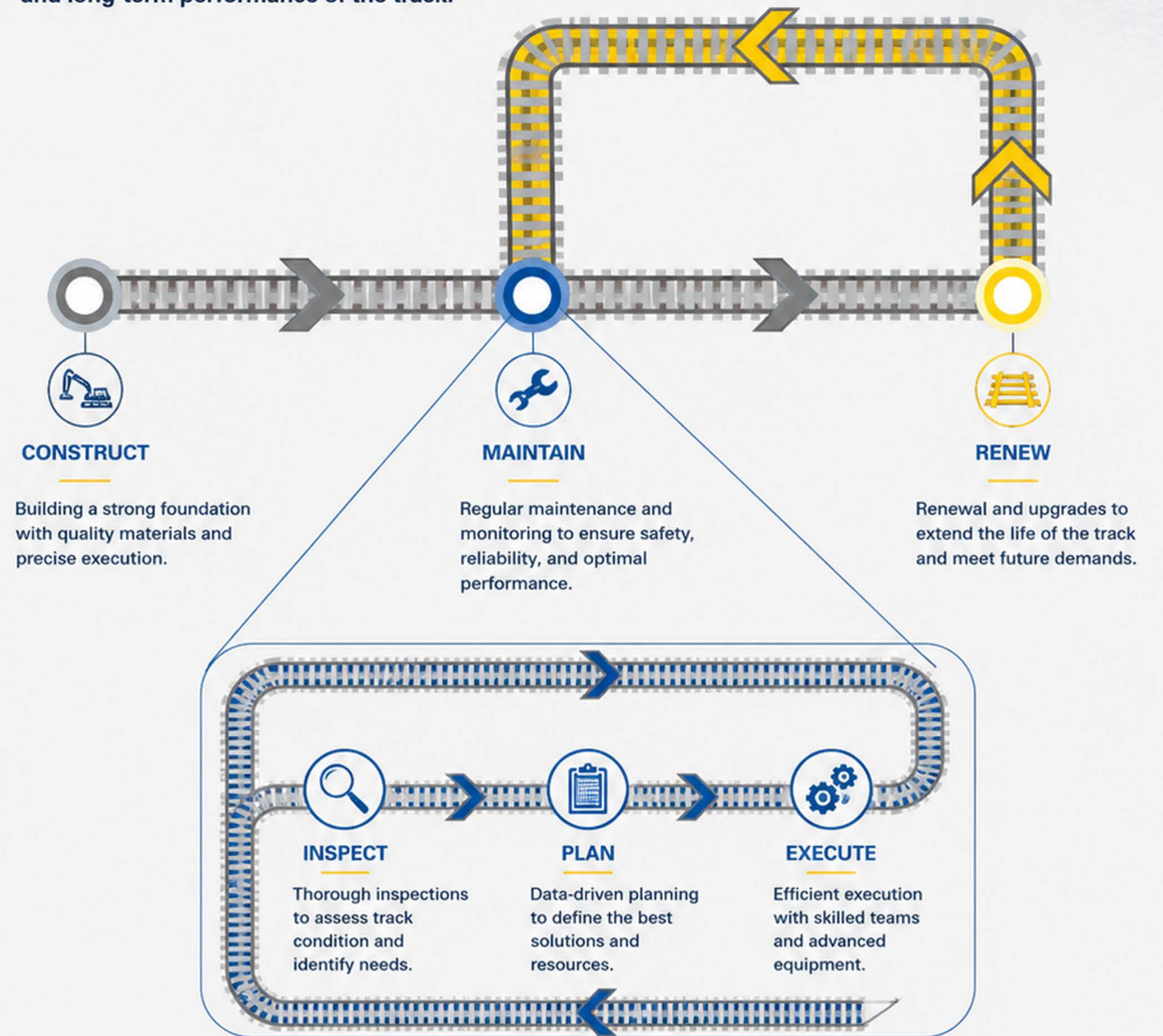


mcsrail.com

# TRACK LIFE CYCLE

From construction to inspection, planning, execution, maintenance, and renewal.

At MCS Rail, we believe that a reliable railway begins with a complete and continuous life cycle approach. Our work is structured around international standards and best practices to ensure safety, efficiency, and long-term performance of the track.



ONE CYCLE. ONE COMMITMENT. ONE GOAL.  
BUILDING BETTER RAILWAYS FOR A BETTER FUTURE.



- SAFETY
- QUALITY
- RELIABILITY
- SUSTAINABILITY

## Projects gallery

لم تكن هذه المشروعات مجرد مواقع عمل، بل كانت صفحات من الجهد والالتزام والفخر. في كل موقع، ترك فريق MCS Rail بصمة حقيقية تعكس الانضباط، الإخلاص، والإيمان بدورنا في تطوير قطاع السكك الحديدية في مصر.

نتوجه بخالص الشكر والتقدير لكل أعضاء فريقنا، الذين صنعوا بهذا الجهد نجاحات نعتز بها، ونواصل معهم طريقنا نحو إنجازات أكبر في خدمة وطننا الحبيب.

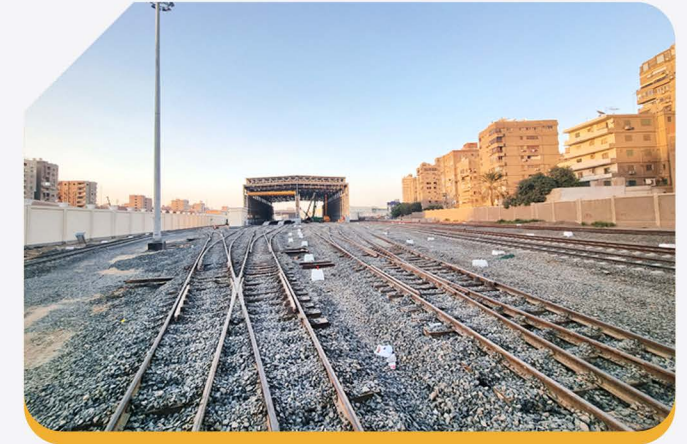
These projects were not merely work locations, but pages of effort, commitment, and pride. At every site, the MCS Rail team left a real mark that reflects discipline, dedication, and our belief in our role in developing Egypt's railway sector.

We extend our sincere thanks and appreciation to all our team members, whose efforts made these achievements possible. Together, we continue our journey toward greater accomplishments in service of our beloved country.

## Bashtil Station

### A Continuation of Excellence

Our selection to participate in the construction of railway tracks at Bashtil Station, one of the key stations on the Upper Egypt line, reflects the strong foundation of trust we have built over the years. It also highlights our continuous record of successful railway projects and represents another significant milestone in our growing list of achievements.



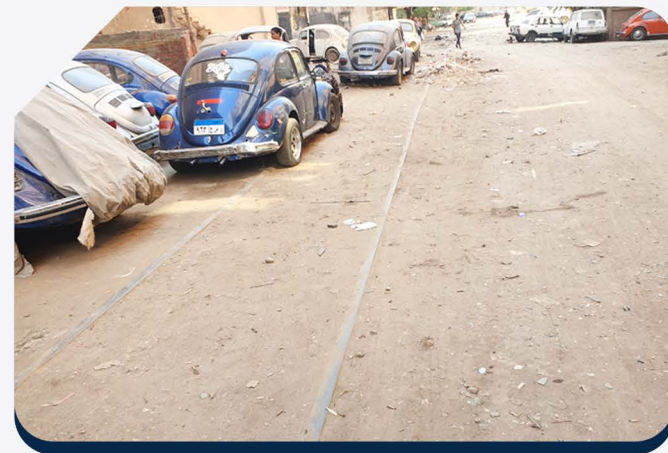
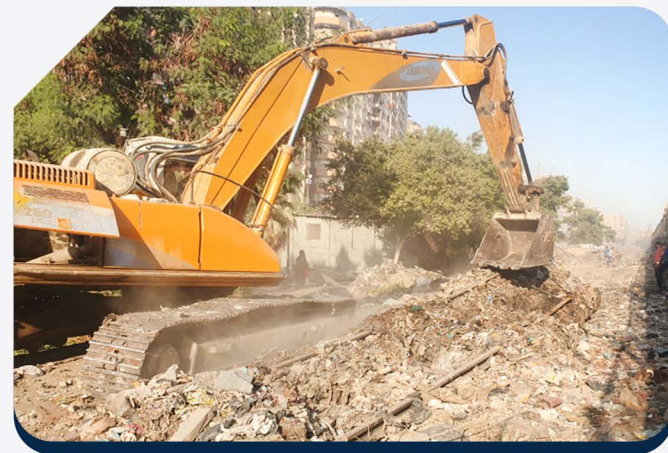
## ! Ain Shams Project

This site holds many memories. When we were selected for this mission, we knew it would be challenging. However, with strong experience and determination, we delivered results that exceeded expectations. Within just 20 hours, we successfully dismantled, sorted, stacked, and transported 1 kilometer of railway. The project also included 13,600 meters of track and 6 complete switch units, relocated from Cairo to Tanta (approximately 100 km) in less than a month. All work was completed with no losses and at a cost 75% lower than competitors, without any significant damage to rails, concrete sleepers, or fittings. This achievement earned well-deserved recognition.

After Excellence

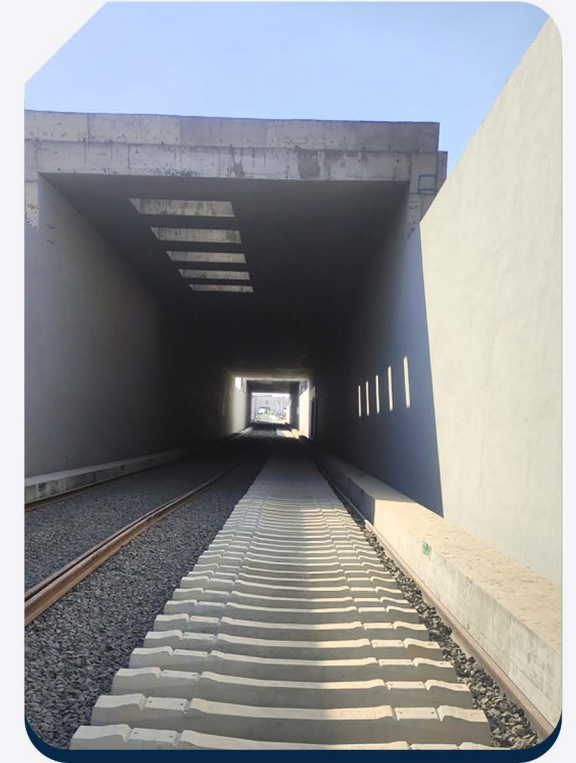


Before Execution



## ! L.R.T Project

After Excellence



Before Execution



## IRMAS Workshop

After Excellence

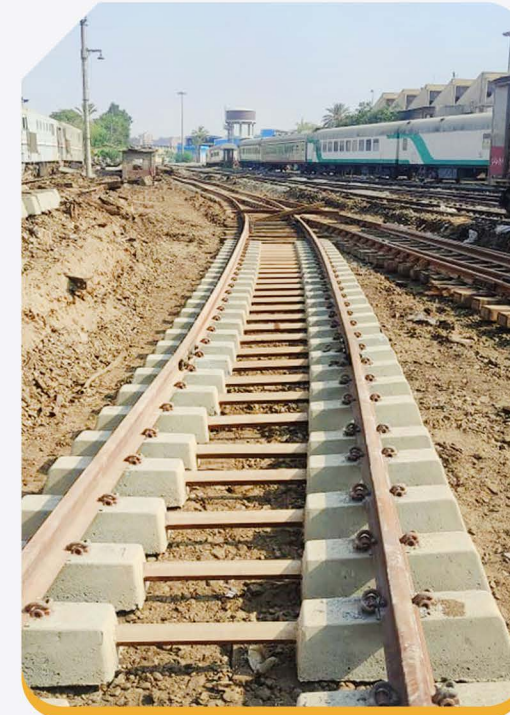


Before Execution

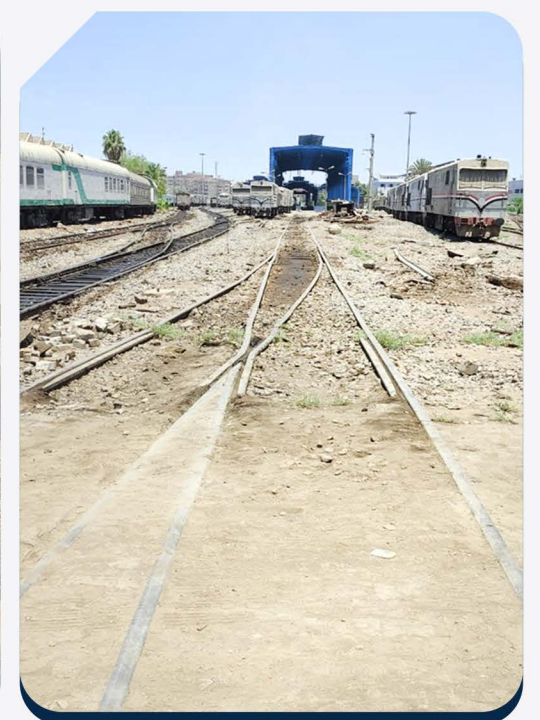
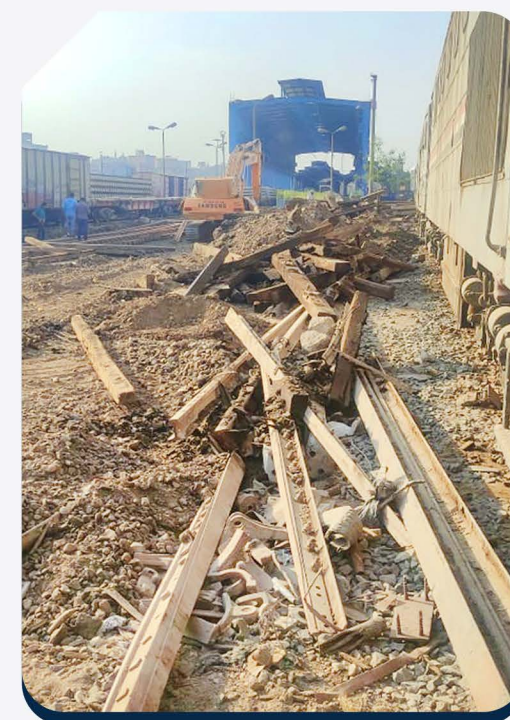


## GA workshop - El farz

After Excellence



Before Execution

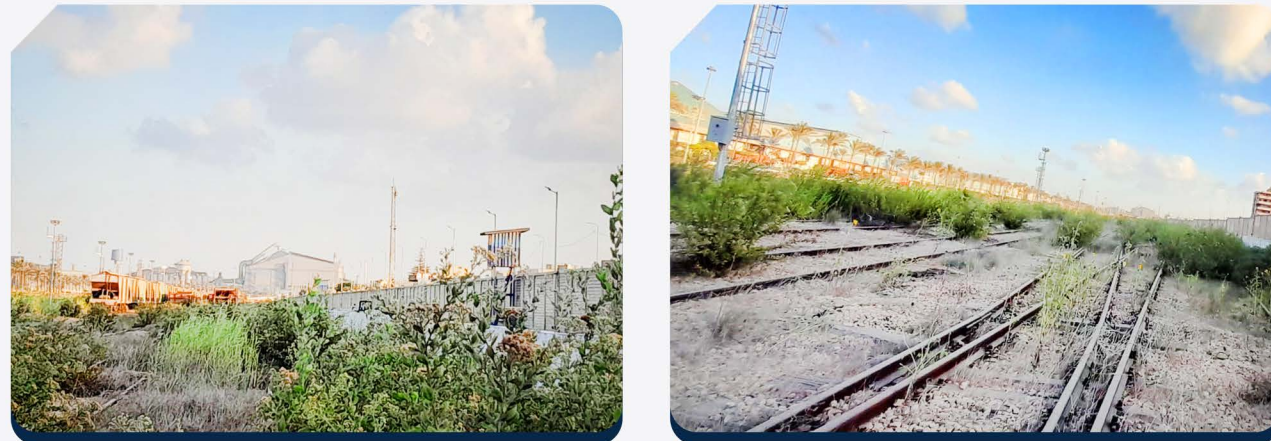


## El Bitash Yard – Dekheila port

After Excellence



Before Execution



## El Tebeen Yard

After Excellence



Before Execution



## El Abwa Yard – Dekheila port

After Excellence

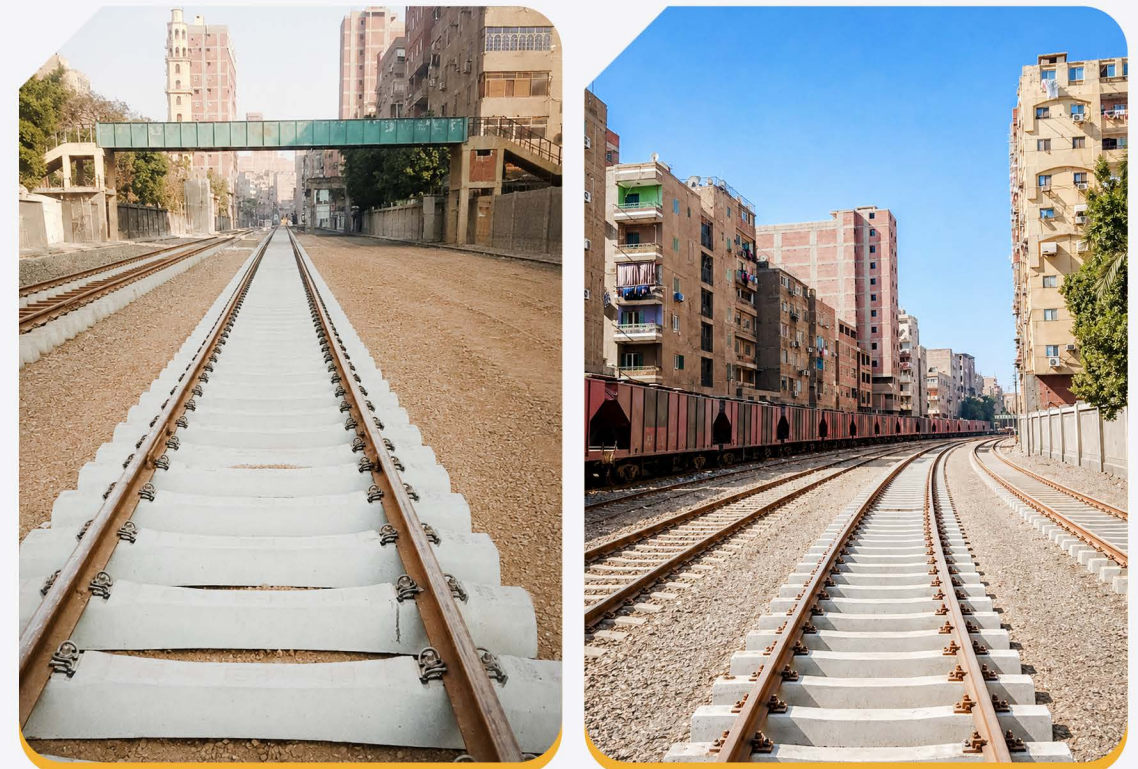


Before Execution

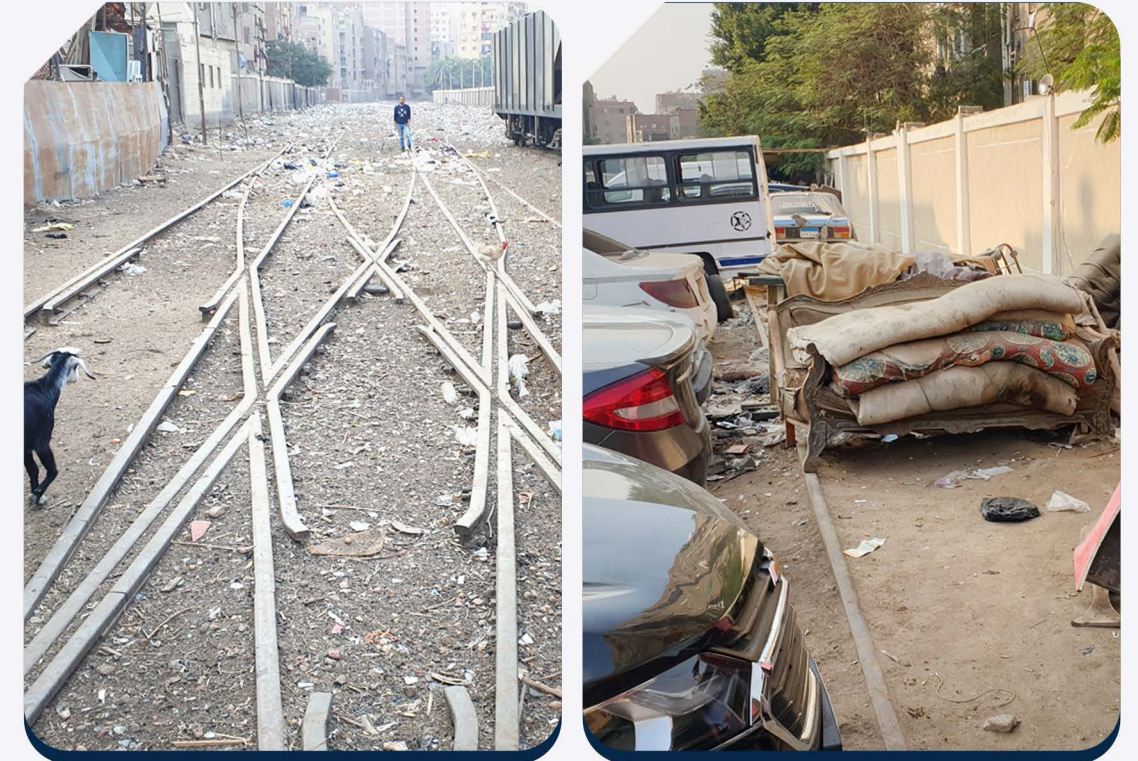


## Imbaba Silos

After Excellence



Before Execution



## ▼ Rail way line Abbassia - tora

After Excellence

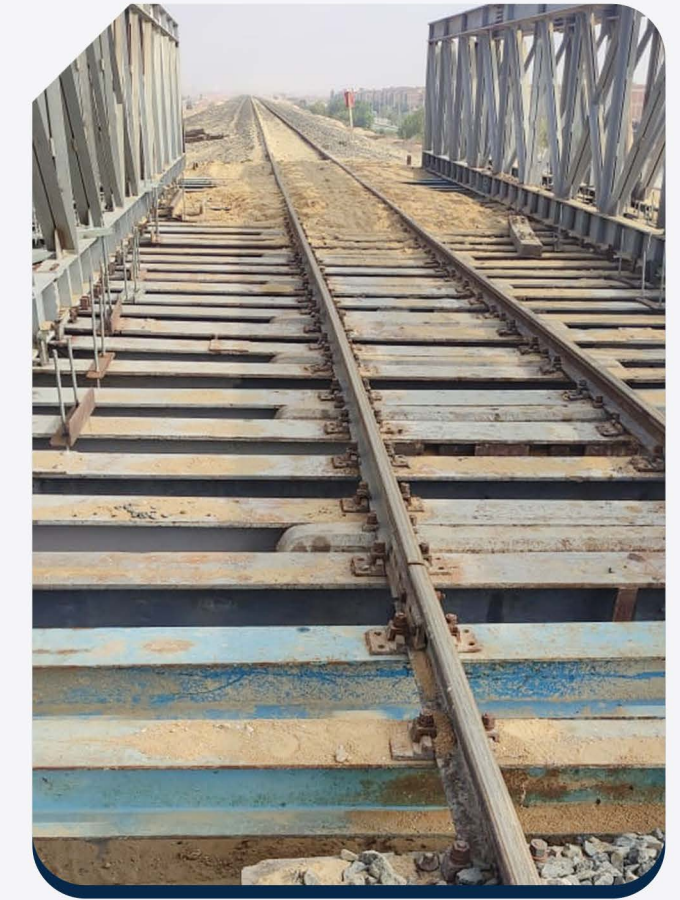
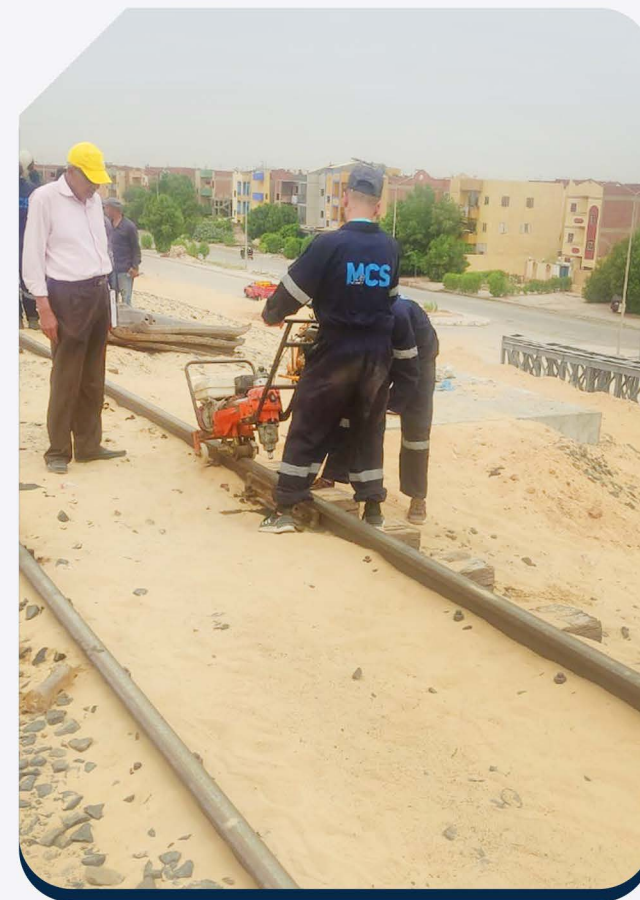
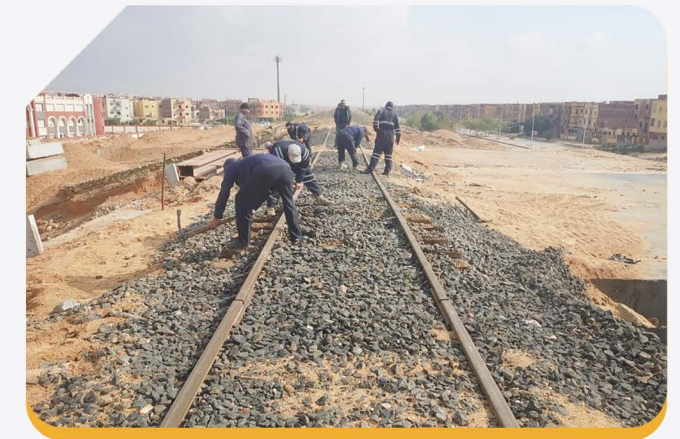


Before Execution



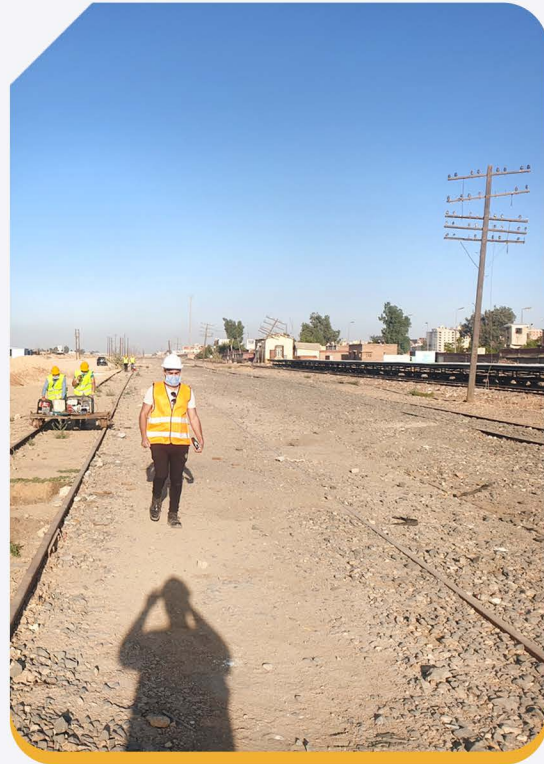
## ▼ El Wahat Railway Line

MCS Rail was entrusted with this critical mission to ensure the safe and uninterrupted movement of heavy trains on the El Wahat line during the installation and positioning of a precast tunnel beneath the railway track.



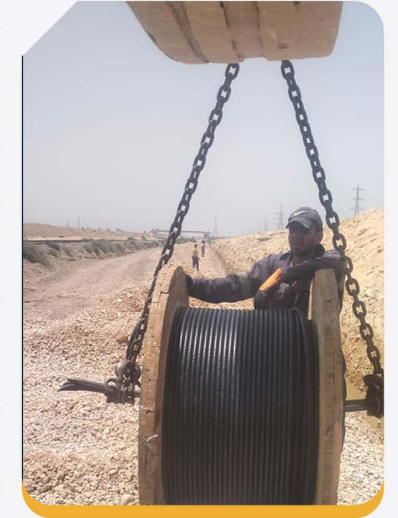
## El Obour Station

MCS Rail carried out the removal of railway tracks from El Obour Station up to kilometer 17 on the Suez Line. The works included dismantling, sorting, stacking, and transporting the track materials to the Authority's designated storage locations across various sites.

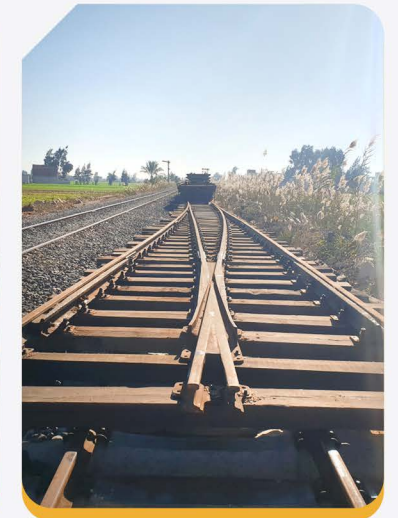


## El Hammam Block & Bahig

MCS Rail carried out trench excavation works between El Hammam Block and Bahig Block for the installation of a marine cable. The trench was excavated with a width of 30 cm, a depth of 1.5 meters, and an ap-



## Al Thawra Station



# OUR PRODUCTS & MACHINERY

PART OF OUR  
EXTENSIVE  
PRODUCT RANGE

MCS is committed to providing **high-quality products** that meet customer requirements and comply with the required specifications. As we are not only a supplier or trader, but also a company that uses the same machines we supply, we understand the real working conditions and market needs.

We believe that **delivering real value** is our main target. Therefore, we study and simulate the conditions in which each product will be used, then engineer and provide solutions that best fit the market requirements.

**PLEASE NOTE: THE FOLLOWING ARE SOME OF OUR MACHINERY, NOT THE FULL RANGE. MORE PRODUCTS ARE AVAILABLE.**

## MACHINERY LIST (SOME ITEMS)



01 RAIL DRILL MACHINE



02 WOODEN DRILL MACHINE



03 RAIL CUTTING MACHINE



04 RAIL SENSORS



05 CLAMPS



06 GRINDING MACHINES



07 YARD HYDRAULIC POWER WRENCH



08 MECHANICAL RAIL BOLT WRENCH



09 HYDRAULIC RAIL STRESSOR



10 HYDRAULIC RAIL TRIMMER

### WE ALSO SUPPLY

## EXCAVATOR BOARDS for LIEBHERR

- High Quality & Reliable Performance
- Perfect Fit for Maximum Efficiency
- Built for Demanding Railway Applications



LIEBHERR A 900



LIEBHERR A 922

HIGH QUALITY & RELIABILITY

BUILT FOR REAL WORKING CONDITIONS

ENGINEERED TO MEET MARKET NEEDS

YOUR TRUSTED PARTNER IN RAILWAY SOLUTIONS

# OUR PEOPLE OUR VALUES



Our team of motivated employees are crucial for our company's success. MCS Rail understands the importance of attracting qualified employees and providing them with the necessary tools for a long-term career. Based on our strong corporate values, we strive to create a culture of learning, growth and inclusion. Our values are the link that connects us all. These values reflect our overarching direction and purpose as a business.



### INTEGRITY

We demonstrate an uncompromising commitment to ethical principles. We act ethically and in the interest of the customers we serve. We treat others with dignity and respect, and value honesty above all else.



### PASSION FOR WINNING

We are passionate about winning through creating exceptional value for our employees, customers and shareholders. Excellence is not an act, but a habit.



### EMPLOYEE CARE

We are committed to safe, appealing work environments, market-competitive benefits programs and investment in personal development. We must treat our people as we would like to be treated ourselves, and we must attract and retain the very best talent throughout our organization.



### SATISFY THE CUSTOMER

We are engaged in the relentless pursuit of customer satisfaction by listening to the customers' needs, and consistently delivering value that exceeds their expectations.



### INCLUSION

We strive to create an environment where all people are actively included. Our diverse global workforce is our most valuable asset. We must foster a climate in which every employee is encouraged to engage and dedicate his or her talents and experience.



### RESPECT

We respect all individuals and their contributions. MCS Rail will not tolerate discrimination or harassment of any kind. Our employees have a right to a safe, respectful workplace. Our management has a mandate to provide it.



STRONG VALUES.  
STRONGER TOGETHER.

[www.mcsrail.com](http://www.mcsrail.com)

# QUALITY

Quality At The Source,  
Excellence In Every Detail.



# SAFETY

OUR GOAL  
IS SIMPLE,  
ZERO HARM!



Our goal is to provide our customers with products of the **highest quality**

With our strategy “Quality At The Source”, every employee assumes responsibility for the performance, consistency, safety and value of our products. Customer focus is the backbone of our ISO 9001 compliant quality sector of our integrated management system.

On this basis, all processes are regularly monitored, and process effectiveness and efficiency are continuously improved. This enables us to offer our customers first-class products and services that meet and exceed our customer expectations.



BUILT ON QUALITY  
DELIVERED WITH TRUST



**CUSTOMER FOCUS**  
Understanding and exceeding our customers’ expectations.



**CONSISTENCY**  
Delivering reliable and consistent quality in everything we do.



**CONTINUOUS IMPROVEMENT**  
Monitoring, measuring and improving our processes every day.



**EMPLOYEE OWNERSHIP**  
Empowering every employee to take ownership of quality at the source.

At MCS Rail, our Environmental, Health & Safety (EH&S) vision is Zero Harm to people and the environment so everyone can enjoy life at work, home, and play.

We are committed to operating in a manner that protects and sustains the safety, health and wellness of our people, our customers’ employees, contractors, suppliers and the communities in which we live and operate.

We will be in compliance with applicable statutes, regulations and ordinances throughout our worldwide operations. Based on proven beliefs and principles, our EH&S program empowers the organization and individuals to achieve the highest level of safety and environmental performance.

The foundation of our EH&S program is built on the principles derived from the Corporate philosophy within MCS Rail’s EH&S Framework guidelines.



**WE PROTECT**  
our people



**WE RESPECT**  
our environment



**WE CARE**  
for our communities



**WE DELIVER**  
safe solutions

Safety is not just a priority, it is a **core value** at MCS Rail.

Communication, Energy Control, and Machine Guarding, but they also emphasize human behavior through relation based safety activities and our leadership training courses. With strong Senior Management involvement and participation, the Safety, Health, and Environment department communicates safety through Site Assessments, Environmental, Health and Safety Alerts, Monthly Tracking Reports, Incident Review, Safety Committees and Weekly and Monthly Safety Meetings.



# ENVIRONMENTAL COMMITMENT

MCS Rail will endeavor to protect the environment and be a responsible member of the communities in which we operate. We will do so by following the key principles expressed in our Environmental Policy and as follows:



## ENVIRONMENTAL LEADERSHIP

MCS Rail will strive to be a leader by identifying and implementing environmental best practices.



## ENVIRONMENTAL MANAGEMENT SYSTEMS

MCS Rail will maintain management systems that promote compliance with applicable environmental laws and regulations.



## PERFORMANCE

MCS Rail will operate in ways designed to reduce impacts to the air, water and land. Waste will be properly managed and noise impacts will be appropriately controlled.



## CONTINUOUS IMPROVEMENT

MCS Rail will maintain management systems that promote compliance with applicable environmental laws and regulations.



## SUSTAINABLE BUSINESS OPERATIONS

MCS Rail will commit to the efficient use of resources by conserving energy and pursuing waste minimization opportunities.

# OUR VALUED CLIENTS

MCS is not focused on quick sales, but on building long-term, win-win partnerships with our clients.

Below are some of the main clients we are proud to work with.



## QUALITY YOU CAN TRUST

Committed to the highest standards in every project.



## SPEED THAT DELIVERS

Fast execution without compromising on quality.



## PARTNERSHIPS THAT LAST

Building long-term relationships based on reliability and results.



# MCS

RAIL

— RAILWAY SOLUTIONS —

**THANK YOU**

MCS Rail — Your Trusted Partner in Railway Solutions



9 El Sayed Zakaria Street  
Sheraton District - Cairo



+2 010 9999 80 27  
+2 022 2667 66 4



info@mscrail.com  
www.mscrail.com